



Eighty Seven
New Square
Chesterfield

Leverton UK Ltd
Commercial Interiors

87 New Square

Our latest residential development in the historic market town of chesterfield is the grade II listed 87 New Square.

Comprising of nine one- and two-bedroom luxury apartments and penthouses within a beautiful double bay fronted red brick building of significant historical importance dating back to the mid 1700's.

All apartments have access to the below:

- Main entrance
- Rear entrance
- Lift
- Secure/private post-box
- Secure/gated car parking space available (separate negotiation)

Contact details:

Phone: 01246231848

Email: molly@levertonuk.com

Address: Leverton UK

Harper Hill House Farm

Harper Hill

Chesterfield

S42 6QS

Apartment 1

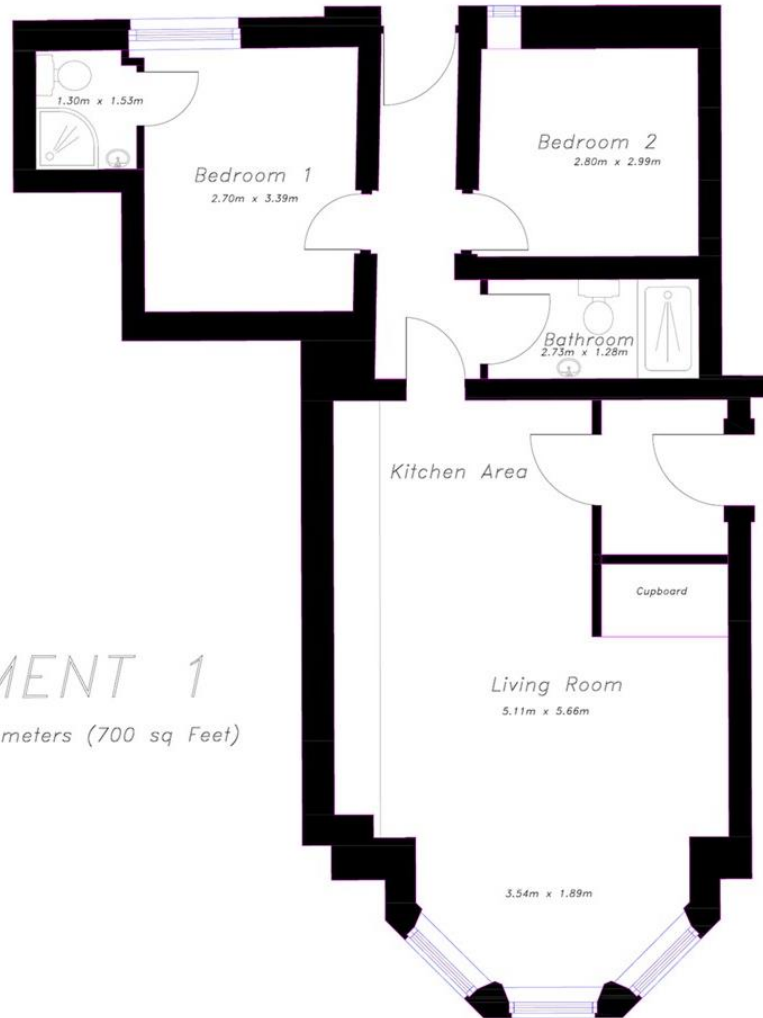
- Front and rear access
- 2 Bedrooms
- Entrance hall
- En suite
- Kitchen/living room
- Family bathroom

When first entering this ground floor apartment, you're greeted with a spacious entrance hall. This then leads into the kitchen/living area.

The kitchen has been fitted with brand new units, including integrated oven/induction hob/fan, fridge freezer, dishwasher, washing machine and tumble dryer.

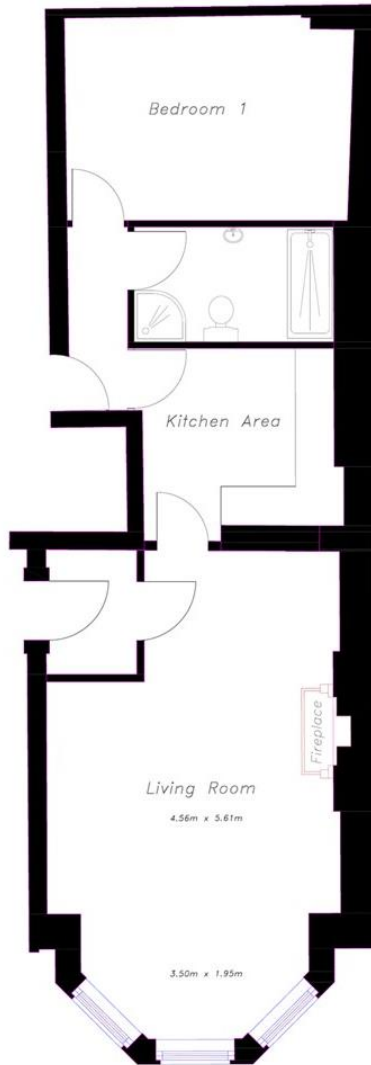
The family bathroom offers a bath with over shower, sink and toilet.

The master bedroom is a double with an additional en suite including a shower, sink unit and toilet. There is then a further double bedroom found opposite. This apartment can be access by both the front and rear door.



APARTMENT 1

Approximately 65 sq meters (700 sq Feet)



Apartment 2

- Front and rear access
- Entrance hall
- Living/diner
- Kitchen
- Double bedroom
- Bathroom

This ground floor apartment offers a spacious entrance hall which then leads into the open plan living/dining area. This room features high ceilings and a beautiful mantelpiece.

The kitchen has been fitted with brand new units, including integrated oven/induction hob/fan, fridge freezer and dishwasher. A separate utility room houses a washing machine and tumble dryer.

The bathroom is completed with a bath, separate shower, sink unit and toilet.

A skylight window complements the double bedroom, maximising the light in this room.

Access can be gained by both the front/rear doors.

APARTMENT 2
Approximately 64 sq meters (688sq Feet)

Leverton UK Ltd
Commercial Interiors

Apartment 3

- Front entrance
- Double bedroom
- Living/diner
- Bathroom
- Study space
- Separate utility room

This ground floor apartment has its very own access.

Entering the living room, space is provided for furniture and an additional area which can be used for a study.

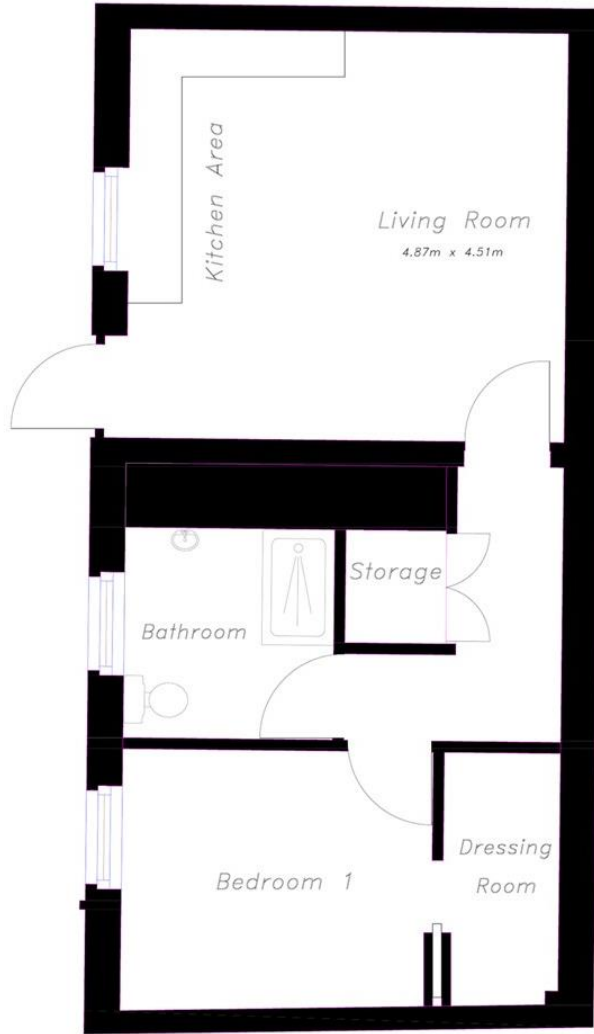
The kitchen has been fitted with brand new units, including integrated oven/induction hob/fan, fridge freezer and dishwasher. A separate utility room houses a washing machine and tumble dryer.

The master bedroom is a double with the bathroom next which includes a bath, separate shower, sink and toilet.



APARTMENT 3

Approximately 49.5 sq meters (532 sq Feet)



APARTMENT 4
Approximately 52 sq meters (559 sq Feet)

Apartment 4

- Front access
- Kitchen/living room
- Bathroom
- Double bedroom
- Dressing room
- Storage with washing machine/tumble dryer

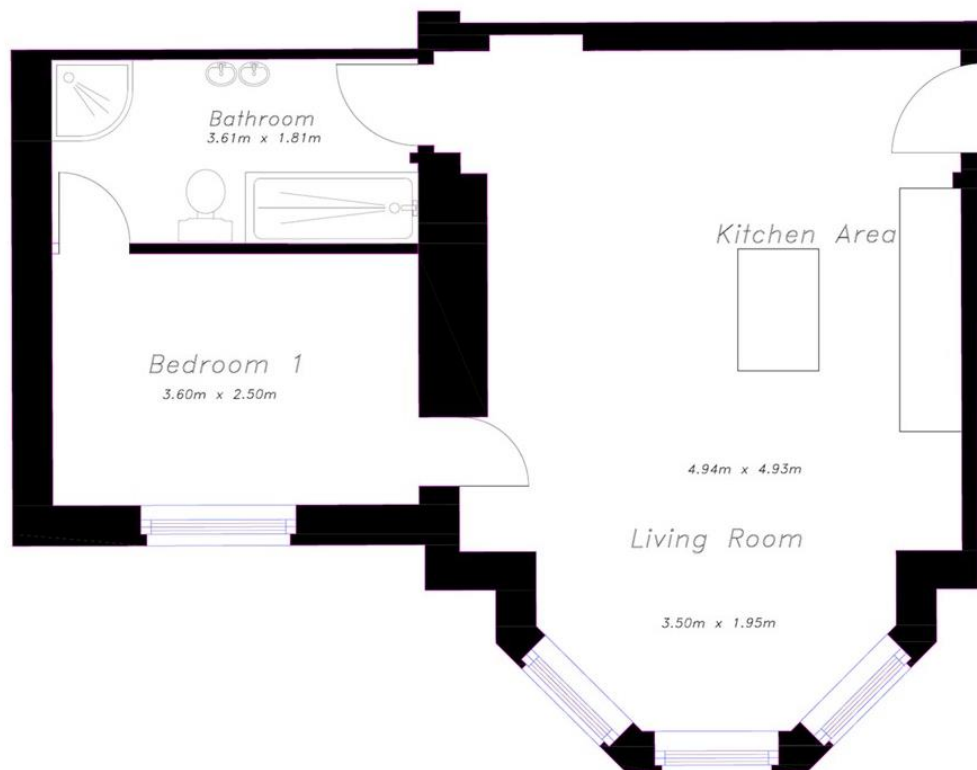
This ground floor apartment has its very own access.

Entering the kitchen which has been fitted with brand new units, including integrated oven/induction hob/fan, fridge freezer and dishwasher. The open plan living area provides space for furniture.

Then leading into the hallway, the storage cupboard houses a washing machine and tumble dryer.

The bathroom includes a shower, sink and toilet.

Lastly, the master bedroom is a double which also offers a walk-in wardrobe/dressing room.



Apartment 5

- Front access
- Bathroom
- Kitchen/living room
- Separate utility room
- Double bedroom

This one-bedroom apartment is situated on the first floor.

Entering the kitchen which has been fitted with brand new units and island, including integrated oven/induction hob/fan, fridge freezer and dishwasher. A separate utility room and storage area is also included with fitted units and washing machine/tumble dryer.

The open plan living area offers a beautiful mantel piece as well as overlooking the views of Chesterfield.

The master bedroom is a double which gives access to the bathroom. This can also be entered through the living area and includes a bath, separate shower, sink and toilet.

APARTMENT 5

Approximately 47.5 sq meters (511 sq Feet)



APARTMENT 6

Approximately 64.6 sq meters (695sq Feet)

Apartment 6

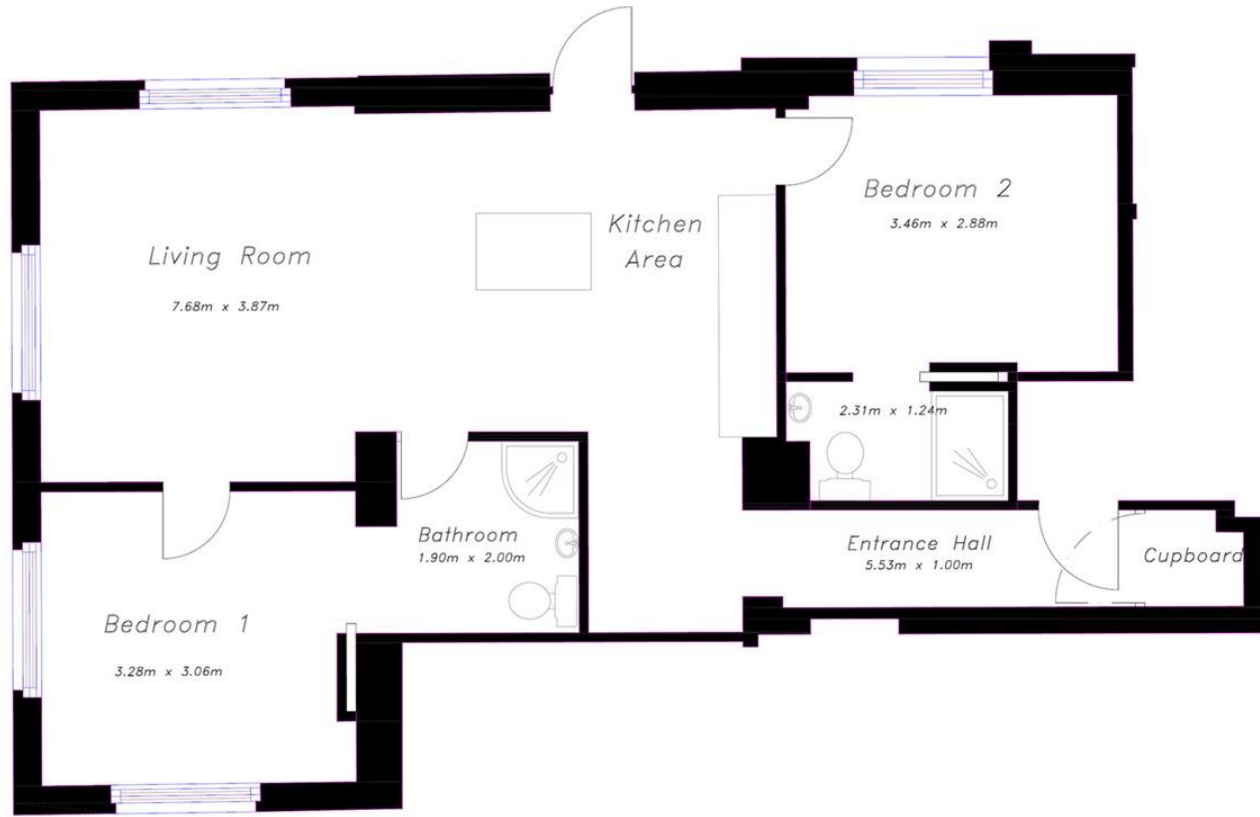
- Front access
- Shower en suite
- Kitchen/living room
- Family bathroom
- 2 Double bedrooms
- Separate utility room

This two-bedroom apartment is situated on the first floor.

Entering the kitchen which has been fitted with brand new units and island, including integrated oven/induction hob/fan, fridge freezer and dishwasher. A separate utility room and storage area is also included with fitted units and washing machine/tumble dryer.

The open plan living area offers a beautiful mantel piece, storage cupboard and access to the second double bedroom. The family bathroom can also be entered through the living room, and includes a bath, over shower, sink and toilet.

The master bedroom is situated towards the back of this apartment and includes a private shower.



APARTMENT 7

Approximately 66 sq meters (710 sq Feet)

Apartment 7

- Front and rear access
- En suite
- Entrance hall
- Family bathroom
- Kitchen/living room
- Separate utility room
- 2 Double bedrooms

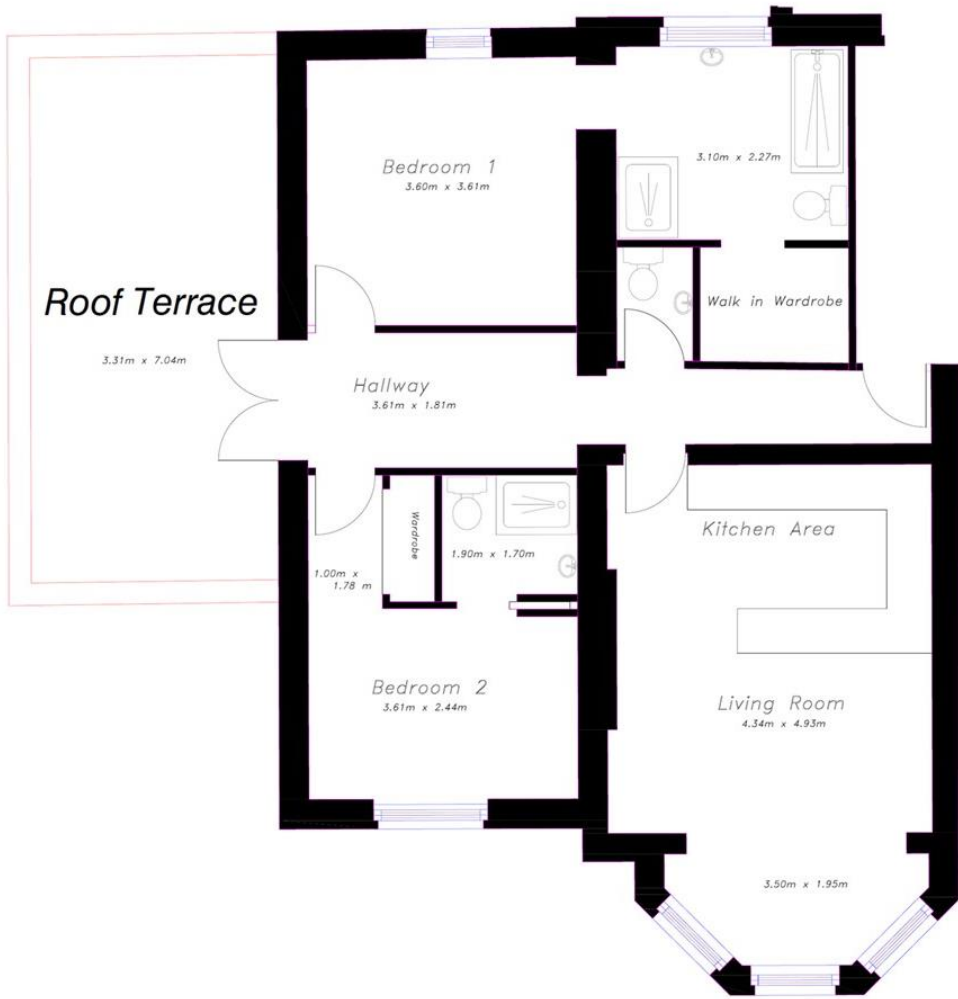
When first entering this two-bedroom, first floor apartment, you're greeted with a spacious entrance hall which also includes a storage cupboard.

Then leading into the kitchen which has been fitted with brand new units and island, including integrated oven/induction hob/fan, fridge freezer and dishwasher. A separate utility room and storage area is also included with fitted units and washing machine/tumble dryer. The open plan living area gives plenty of space for furniture.

The first bedroom is a double which provides a Jack and Jill style bathroom/en suite. The bathroom includes a shower, sink and toilet, and can be accessed through the living area too.

The second bedroom is also a double which has an en suite including a shower, sink and toilet.

This apartment can be accessed by both the front and rear door.



PENTHOUSE 1

Approximately 84.6 sq meters (910 sq Feet)

ROOF TERRACE

Approximately 23.3 sq meters (250 sq Feet)

Penthouse 1:

- Entrance hall
- Kitchen/living room
- WC
- 2 Double bedrooms
- 2 En suites
- Walk-in wardrobe
- Private roof terrace
- Separate utility room

This penthouse offers beautiful wall tiling throughout the entrance hall which compliments the modern flooring and décor.

The kitchen has been fitted with brand new units with integrated oven/induction hob/fan, fridge freezer, wine fridge and dishwasher. A separate WC is adjacent to the living/dining area. A separate utility room and storage area is also included with fitted units and washing machine/tumble dryer.

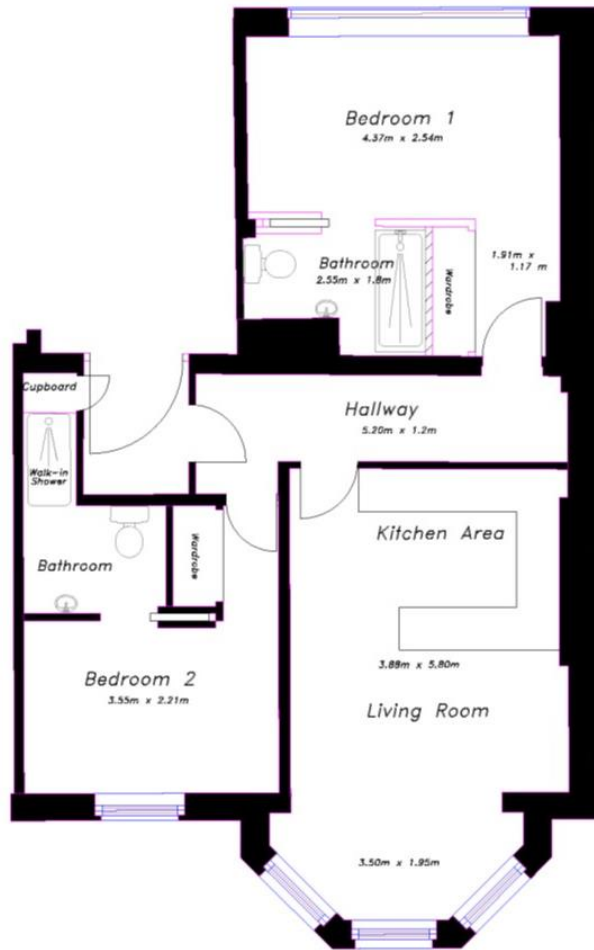
The first double bedroom has an en suite with a freestanding bath and rainfall shower. The bathroom also has a mirrored TV and a large walk-in wardrobe.

The second double bedroom has a storage area suitable for a wardrobe. The en suite for this bedroom offers a shower, sink unit and toilet.

The property also gives exclusive access to its very own roof terrace, overlooking the West of Chesterfield towards the Peak District.

Underfloor heating is provided through the hallway, kitchen and both bathrooms.

Leverton UK Ltd
Commercial Interiors



PENTHOUSE 2

Approximately 70 sq meters (753 sq Feet)

Penthouse 2

- Entrance hall
- 2 En suites
- Kitchen/living room
- Separate utility room
- 2 Double bedrooms

When first entering this two-bedroom penthouse, you're greeted with a spacious entrance hall which also includes a storage cupboard.

The kitchen has been fitted with brand new units with integrated oven/induction hob/fan, fridge freezer, wine fridge and dishwasher. A separate utility room and storage area is also included with fitted units and washing machine/tumble dryer.

The first double bedroom has an en suite with a bath, over shower, sink and toilet. This bedroom also has a storage area which is suitable for a wardrobe.

The second bedroom is also a double and again has an en suite which includes a walk-in shower, sink and toilet.

Underfloor heating is provided through the hallway, kitchen and both bathrooms.